



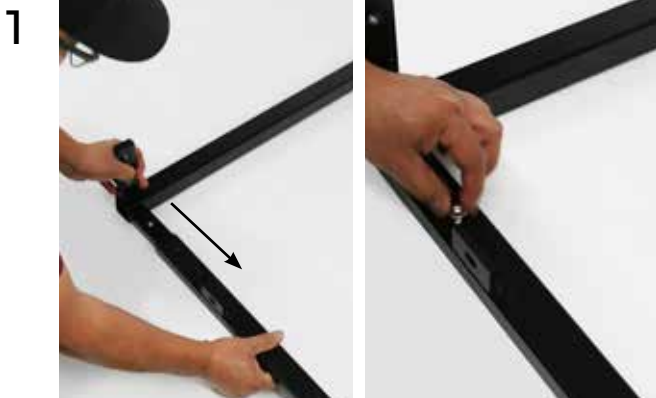
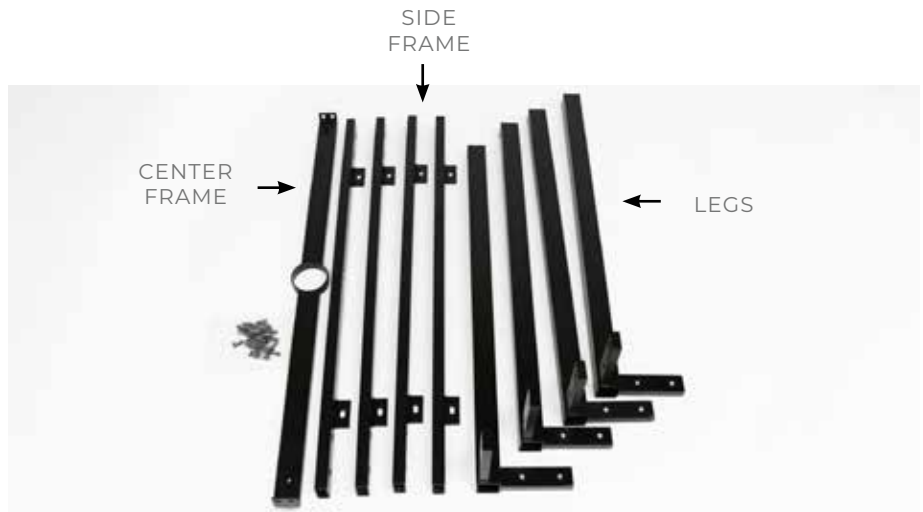
FOUR LEG TABLE FRAME ASSEMBLY FOR ADA OR UMBRELLA USE

PARTS LIST

- (4) Legs
- (4) Side Frames
- (1) Center Frame
- (20) Screws
- (1) Allen Key

TOOLS LIST

Allen Key



START BY SLIDING A LEG INTO ONE OF THE SIDE FRAME. PLACE SCREWS IN HOLES AND FINGER TIGHTEN. ***DO NOT FULLY TIGHTEN!***



SLIDE ANOTHER LEG INTO THE OTHER SIDE OF THE SIDE FRAME. PLACE AND FINGER TIGHTEN THE SCREWS. ***DO NOT FULLY TIGHTEN!***



SLIDE A SIDE FRAME ONTO THE OTHER OF THE FIRST LEG. PLACE AND FINGER TIGHTEN THE SCREWS. ***DO NOT FULLY TIGHTEN!***



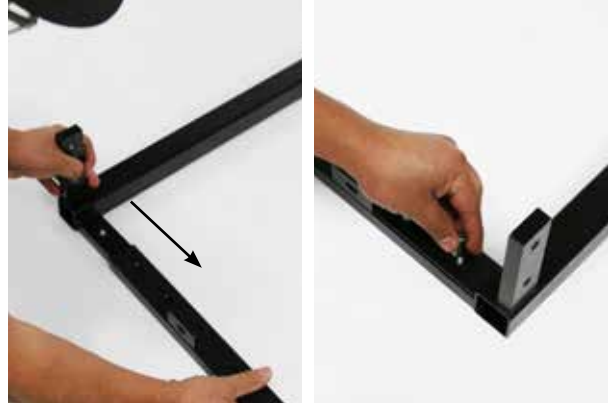
REPEAT STEP 3 FOR THE OTHER SIDE. ***DO NOT FULLY TIGHTEN!***

5



THIS IS WHAT YOU WILL HAVE RIGHT NOW.
PUT IT TO THE SIDE.

6



REPEAT STEPS 1 AND 2 WITH THE LAST SIDE
FRAME AND TWO LEGS

7



SLIDE THE LEGS AND FRAME FROM STEP 6 INTO
THE TWO SIDE FRAMES FROM STEP 5. PLACE AND
FINGER TIGHTEN THE SCREWS.
DO NOT FULLY TIGHTEN!

8



TAKE FRAME AND LAY IT FLAT WITH THE FOUR
LEGS FACING UP.

9



ALIGN CENTER FRAME PIECE WITH HOLES IN THE MIDDLE OF THE FRAME. PLACE AND FINGER TIGHTEN SCREWS ON BOTH SIDES OF THE FRAME.
DO NOT FULLY TIGHTEN!

10



AFTER ALL SCREWS HAVE BEEN PLACED AND FINGER TIGHTENED, USE ALLEN KEY TO FULLY TIGHTEN EVERY SCREW.

11



FULLY ASSEMBLED FOUR LEG FRAME