





GAR

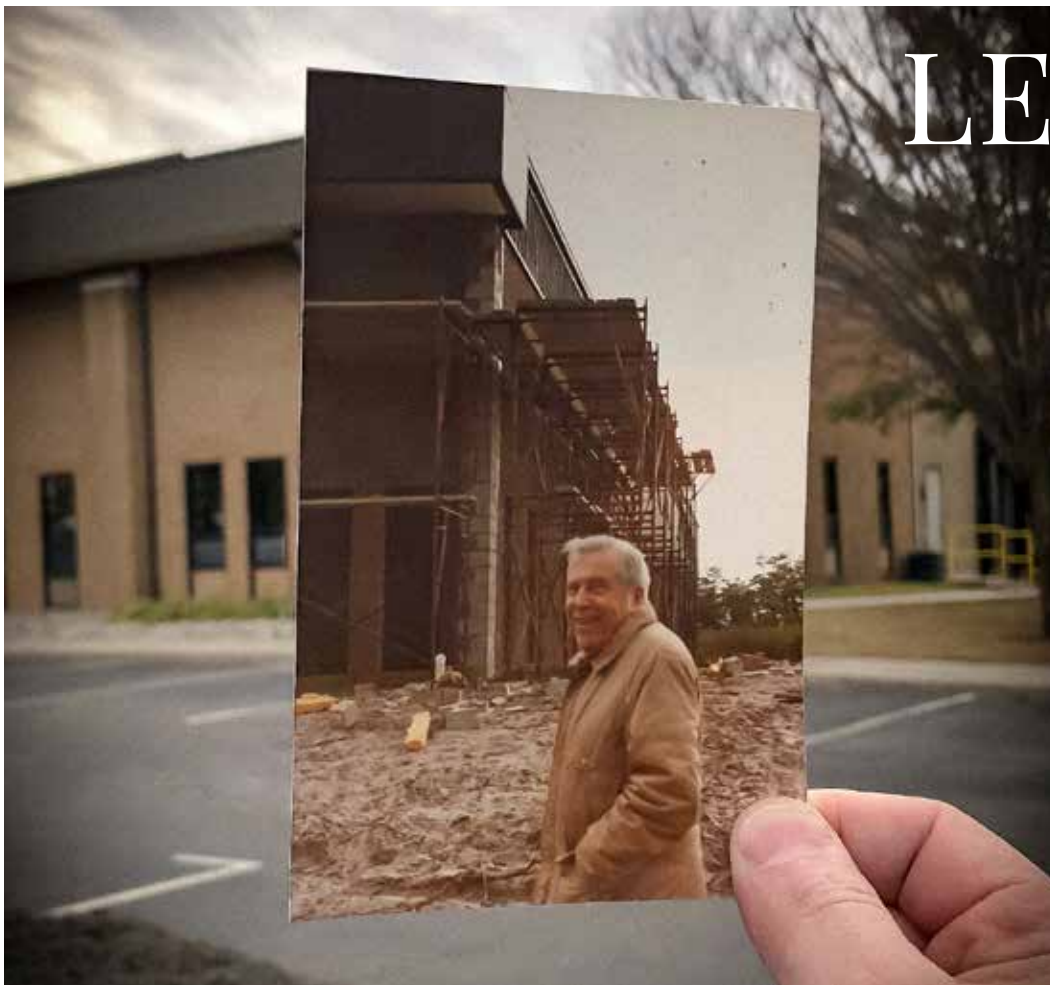
PRODUCTS

EST.1956

PRODUCT GUIDE

TABLE OF CONTENTS

INFORMATION	3-7
LEGACY	3
WARRANTY	4
COMMITMENT	5
FINISHES	6
UPHOLSTERY CODES AND ABBREVIATIONS	7
INDOOR	8-34
DESIGN	8-11
FOUNDATION	11-15
CLASSIC	16-20
BASIC	21-25
LOUNGE	26-30
CHAIR DETAILS AND ACCESSORIES	30
TABLE BASES	31-33
TABLE TOPS	34-36
TABLE DETAILS AND ACCESSORIES	36
OUTDOOR	37-44
OUTDOOR SEATING	37-39
TABLE TOPS	41-44
CLEANING AND CARE	47-48
INDOOR CARE	47
OUTDOOR CARE	48



LEGACY

HONESTY. INTEGRITY. LOYALTY. QUALITY

From a small store front building on Central Avenue in Newark, New Jersey, the Garfunkle legacy was born. With little money, a tremendous amount of knowledge and the determination, Eleanor (known as Ellie) and Morris (fondly known to all as GAR), started their amazing journey.

Chair product by chair product, barstool element by barstool element; they were determined to seek out a living. Their product was built better. They were immensely loyal to the few clients they had always looking to secure their trust with honesty and integrity.

Let's fast forward to 2024. Here we are in Lakewood, NJ in a 102,000 sq. foot state of the art facility where the legacy continues. We have never strayed from our core values of honesty, integrity, loyalty, and quality.

Start your journey into our continued legacy and always remember:

"GREAT CONVERSATIONS START HERE"



WARRANTY

INDOOR SEATING

GAR Products® warrants all standard indoor wood seating for a period of ten (10) years to be free from structural defects in frame material and craftsmanship under normal use and service, except for the Baron side chair and our Lounge series. The Baron side chair and Lounge series will be warranted for one (1) year. Any finish will be warranted for a period of one (1) year to be free from defects under normal use and service, except for genuine teak, faux teak and Thai teak. These finishes and/or slats require periodic maintenance therefore are not covered by our warranty. Any woven or rope material will be warranted for a period of one (1) year to be free from defects under normal use and service. Glides are not covered under any warranty. This warranty does not include discontinued or closeout items. If there are exceptions to this warranty it will be noted on your order.

INDOOR TABLE BASES

GAR Products® warrants all standard indoor table bases for a period of ten (10) years to be free from structural defects in frame material and craftsmanship under normal use and service. Any finish will be warranted for a period of one (1) year to be free from defects under normal use and service. This warranty does not include discontinued or closeout items. If there are exceptions to this warranty it will be noted on your order.

INDOOR TABLETOPS

GAR Products® warrants all standard indoor tabletops for a period of one (1) year to be free from structural defects in material and craftsmanship under normal use and service. Any finish will be warranted for a period of one (1) year to be free from defects under normal use and service, except for genuine teak, faux teak and Thai teak. These finishes and/or slats require periodic maintenance therefore are not covered by our warranty. This warranty does not include discontinued or closeout items. If there are exceptions to this warranty it will be noted on your order.

INDOOR/ OUTDOOR SEATING

GAR Products® warrants indoor/outdoor seating for a period of three (3) years, with the exception of the Campaign folding chair and the Baron side chair which GAR Product warrants for one (1) year, to be free from structural defects in frame material and craftsmanship under normal use and service. Any finish will be warranted for a period of one (1) year to be free from defects under normal use and service, except for genuine teak, faux teak and Thai teak. These finishes and/or slats require periodic maintenance therefore are not covered by our warranty. Any woven or rope material will be warranted for a period of one (1) year to be free from defects under normal use and service. Glides are not covered under any warranty. This warranty does not include discontinued or closeout items. If there are exceptions to this warranty it will be noted on your order.

OUTDOOR TABLETOPS

GAR Products® warrants outdoor tabletops for a period of one (1) year to be free from structural defects in material and craftsmanship under normal use and service. Any finish will be warranted for a period of one (1) year, with the exception of the Max and Santorini tables which have no warranty, to be free from defects under normal use and service, except for genuine teak, faux teak and Thai teak. These finishes and/or slats require periodic maintenance therefore are not covered by our warranty. This warranty does not include discontinued or closeout items. If there are exceptions to this warranty it will be noted on your order.

**PLEASE SEE
PRICE LIST
FOR FULL
WARRANTY!**

****Please note: Any wood furniture items shipped to a storage facility of any kind must be stored in a climate controlled unit. No warranty claims will be accepted for any reason if not stored in a climate controlled facility. Proof that the unit is climate controlled will be required with any warranty claim. All orders must be inspected immediately upon delivery, even if shipped to a storage facility. No warranty claim will be accepted if the merchandise was not inspected upon delivery.****

COMMITMENT

OUR PROMISE TO YOU

CORE VALUES

A lot has changed over the years, but the one thing that never will is our enduring commitment to delivering quality and value in each product that we manufacture.

QUALITY

According to the dictionary, "In business, engineering, and manufacturing, quality has a pragmatic interpretation as the non-inferiority or superiority of something. It is also defined as being suitable for its intended purpose while satisfying customers expectations." What a perfect description of our product line. We build in a reliable, maintainable and sustainable fashion.

AUTHENTICITY

With 65 years experience, GAR has learned to manufacture seating with a statement. Furniture with a flair for now without forgetting the past. Our statement for today.

HONESTY

Honesty permeates our relationships, processes, and products. As GAR always said, "Build with structural conviction and never compromise the truth"

INTEGRITY

Strong moral and uncompromising ethical principles and values. The word evolved from the latin adjective "Integer", meaning whole or complete. The value, beliefs, and principles of GAR best describe us as a leading manufacturer of commercial seating.

INNOVATION

New ideas, refreshed versions, daring to dream. We have created better solutions to deliver state of the art products. The ability to have a positive impact on the future of our marketplace. Our engineering mantra is "For every action, there is a reaction." Mr. GAR drilled that into our heads. We must build for the unknown. Unfortunately, our product may not be used for its intended purpose. We must over manufacture. We must over design. We must over engineer. Our innovations are dictated by our marketplace to meet the growing customer demand. It is definitely a catalyst for growth. Entrepreneurs continuously look for better ways to satisfy their customer with the first and foremost, improved quality, durability, service and price. GAR prides itself on advanced technologies and innovative organizational strategies.

Always remember,

"GREAT CONVERSATIONS START HERE"



FINISHES



LACQUER FINISH COLOR OPTIONS

GAR Products® offers many models with a Lacquer Finish which is pre-finished overseas and varies from model to model based on the country of origin of our frame builder. Due to the difficulty in maintaining lacquer finish consistencies across multiple sources, GAR Products® will not be responsible for finish variances. Please contact customer service for an image or a sample chip.

UV FINISH COLOR OPTIONS

NOTE: Some UV colors are listed as premium options due to the amount of touch up time required to run. There is an additional \$70 list charge per piece using a premium UV finish.



UV BLACK
(PREMIUM)



UV ANILINE BLACK



UV EBONIZED
WALNUT



UV WALNUT



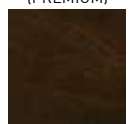
UV NUTMEG



UV TOFFEE



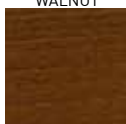
UV HONEY OAK



UV ESPRESSO



UV CHESTNUT



UV SADDLE



UV DRIFTWOOD



UV WHEAT



UV NATURAL

CODE	DEFINITION
2PCOUWB	2 Piece Overupholstered Wrapped Back
2PCOUB	2 Piece Overupholstered Back
2PCOUONB	2 Piece Overupholstered Outside Nail Back
ARM	Arm Chair
BAR	Barstool
BN	Brushed Nickel Finish
BRAM	Barstool with Arms
BS	Box Seat
BTB	Button Tufted Back
BTHB	Button Tufted Hole Back
FB	Fan Back
GB	Grid Back
HB	Hole Back
OUB	Overupholstered Back
OUWB	Overupholstered Wrapped Back
OUHB	Overupholstered Hole Back
OUWNB	Overupholstered Wrapped Nail Back
PB	Padded Back
PCS	Padded Channel Seat
PFB	Padded Fan Back
PGB	Padded Grid Back

CODE	DEFINITION
PHB	Padded Hole Back
PIS	Padded Inset Seat
PNB	Padded Nail Back
PNS	Padded Nail Seat
POB	Padded Outside Back
PONS	Pullover Nail Seat
POS	Pullover Seat
POSW	Pullover Seat with Welt
PS	Padded Seat
PSB	Padded Slat Back
PSWS	Padded Seat with Wrapped Sides
PWB	Padded Wrapped Back
SB	Slat Back
SIDE	Side Chair
SS	Saddle Seat
TPOS	"T" Pullover Seat
VPOS	"V" Pullover Seat
VS	Veneer Seat
WB	Woven Back
WFS	Waterfall Seat
WS.	Wrapped Sides

UPHOLSTERY



INDOOR

DESIGN

HENRIK SERIES

FINISHES: UV

UPHOLSTERY OPTIONS: BSOUHB

SIDE CHAIR 21.75"W | 24"D | 34.5"H | 18"SH | 17"SD

ARMCHAIR 22"W | 23"D | 32"H | 18"SH | 17"SD | 27"AH

BARSTOOL 22.75"W | 23.25"D | 43.5"H | 30"SH | 16.5"SD



SIDE

ARMCHAIR

BARSTOOL

MATTEO SERIES

FINISHES: UV

UPHOLSTERY OPTIONS: BSOUB, BSOUHB

SIDE CHAIR 19.5"W | 20.75"D | 33.25"H | 18"SH

ARMCHAIR 22.25"W | 25"D | 33.25"H | 18"SH | 26.25"AH

BARSTOOL 21"W | 22"D | 42"H | 30"SH

SWIVEL BARSTOOL 19.75"W | 23"D | 42.5"H | 30"SH



SIDE

ARMCHAIR

BARSTOOL

SWIVEL BARSTOOL

HÄGEN SERIES

FINISHES: UV

UPHOLSTERY OPTIONS: VS, PS, PIS, PB

SIDE CHAIR 20"W | 19.5"D | 34.5"H | 18.5"SH | 16"SD

ARMCHAIR 24.5"W | 22"D | 34.5"H | 18"SH | 18"SD | 26.75"AH

BARSTOOL 21"W | 20.5"D | 42"H | 31"SH | 16"SD



SIDE

ARMCHAIR

BARSTOOL

INDOOR

DESIGN

SØREN SERIES

FINISHES: UV

UPHOLSTERY OPTIONS: VS, PIS, PISPB

SIDE CHAIR 18.75"W | 21.5"D | 30.75"H | 18"SH | 16"SD

ARMCHAIR 22.25"W | 22.5"D | 30.5"H | 18"SH | 16"SD | 26.25"AH

BARSTOOL 22.25"W | 22"D | 43.75"H | 30.75"SH | 16"SD



SIDE



ARMCHAIR



BARSTOOL



NO. 53 SERIES

FINISHES: UV

UPHOLSTERY OPTIONS: PS, PSPHB, PSBTHB, PSOUHB, PSSBTHB

SIDE CHAIR 19"W | 24.25"D | 31.5"H | 18"SH | 18.75"SD

BARSTOOL 19.5"W | 23.75"D | 44"H | 32"SH | 18.75"SD



SIDE



BARSTOOL



REGENT SERIES

FINISHES: UV

UPHOLSTERY: POS2PCOU0NB

SIDE CHAIR 20.5"W | 24.5"D | 35.5"H | 17.5"SH



SIDE



INDOOR DESIGN

JARL SERIES

FINISHES: UV

UPHOLSTERY OPTIONS: VS, PS, PB

SIDE CHAIR 20.25"W | 21.75"D | 33.5"H | 17.75"SH | 16"SD

BARSTOOL 20.75"W | 20"D | 42.25"H | 28.5"SH | 16"SD

BACKLESS SIDE 17"W | 17"D | 181.5"H | 18"SH

BACKLESS BAR 18.5"W | 18.5"D | 30.5"H | 30"SH



SIDE

BARSTOOL

SIDE

BARSTOOL

STEN SERIES

FINISHES: UV

UPHOLSTERY: OUSOUB

SIDE CHAIR 17.5"W | 22.5"D | 34.75"H | 18.75"SH | 16"SD

BARSTOOL 20.25"W | 20.25"D | 45.25"H | 30"SH | 16"SD



SIDE

BARSTOOL

FLAIR SERIES

SEAT & BACK PANEL FINISHES: Natural, Black

UPHOLSTERY OPTIONS: PS, PB

SIDE CHAIR 20.5"W | 20.75"D | 31.5"H | 17.75"SH

BARSTOOL 20.75"W | 19"D | 40.75"H | 30"SH



SIDE

BARSTOOL

INDOOR

DESIGN

GS 90 SERIES

FINISHES: UV

UPHOLSTERY OPTIONS: PS

SIDE CHAIR 19.25"W | 20.25"D | 33.25"H | 18.5"SH | 17.5"SD

BARSTOOL 18"W | 20.25"D | 42"H | 30"SH | 16"SD



SIDE

BARSTOOL

GS 95 SERIES

FINISHES: UV

UPHOLSTERY OPTIONS: PS

SIDE CHAIR 19.25"W | 20.25"D | 34.25"H | 18.5"SH | 17.5"SD

BARSTOOL 18"W | 20.25"D | 43"H | 30"SH | 16"SD



SIDE

BARSTOOL

FOUNDATION

ALLEN SERIES

FINISHES: UV

STANDARD UPHOLSTERY: PSPB

SIDE CHAIR 18.5"W | 24.25"D | 38"H | 18.25"SH | 17.75"SD

ARMCHAIR 24"W | 25"D | 38"H | 18.25"SH | 18.75"SD | 26"AH

BARSTOOL 17"W | 23.25"D | 47"H | 30.5"SH | 17.5"SD



SIDE

ARMCHAIR

BARSTOOL

INDOOR

FOUNDATION

BEDFORD SERIES

FINISHES: UV

UPHOLSTERY OPTIONS: POSOUB

SIDE CHAIR 18.5"W | 24.25"D | 38"H | 18.25"SH | 17.75"SD

ARMCHAIR 24.25"W | 25"D | 38"H | 18.25"SH | 18.5"SD | 26"AH

BARSTOOL 17"W | 23.25"D | 47"H | 30.5"SH | 17"SD



SIDE



ARMCHAIR



BARSTOOL

BERGEN SERIES

FINISHES: UV

UPHOLSTERY OPTIONS: PSPSB

SIDE CHAIR 18.5"W | 24.25"D | 38"H | 18.25"SH | 18.5"SD

ARMCHAIR 24.25"W | 25"D | 38"H | 18.25"SH | 19"SD | 26"AH

BARSTOOL 17"W | 23.25"D | 47"H | 30.5"SH | 17.5"SD



SIDE



ARMCHAIR



BARSTOOL

CARLISLE SERIES

FINISHES: UV

UPHOLSTERY OPTIONS: PSPB

SIDE CHAIR 18.5"W | 24.25"D | 38"H | 18.25"SH | 18.5"SD

ARMCHAIR 24.25"W | 25"D | 38"H | 18.25"SH | 19"SD | 26"AH

BARSTOOL 17"W | 23.25"D | 47"H | 30.5"SH | 17.5"SD



SIDE



ARMCHAIR



BARSTOOL

INDOOR

FOUNDATION

DRAKE SERIES

FINISHES: UV

STANDARD UPHOLSTERY: PSWB

SIDE CHAIR 18.5"W | 24.25"D | 38"H | 18.25"SH | 17.75"SD

ARMCHAIR 24.25"W | 25"D | 38"H | 18.25"SH | 18.5"SD | 26"AH

BARSTOOL 17"W | 23.25"D | 47"H | 30.5"SH | 17"SD



SIDE

ARMCHAIR

BARSTOOL

ELLIS SERIES

FINISHES: UV

STANDARD UPHOLSTERY: PSPB

SIDE CHAIR 18.5"W | 24.25"D | 38"H | 18.25"SH | 17.75"SD

ARMCHAIR 24.25"W | 25"D | 38"H | 18.25"SH | 18.75"SD | 26"AH

BARSTOOL 17"W | 23.25"D | 47"H | 30.5"SH | 17.5"SD



SIDE

ARMCHAIR

BARSTOOL

ESSEX SERIES

FINISHES: UV

STANDARD UPHOLSTERY: POSBTB

SIDE CHAIR 18.5"W | 24.25"D | 38"H | 18.25"SH | 17.5"SD

ARMCHAIR 24.25"W | 25"D | 38"H | 18.25"SH | 18.5"SD | 26"AH

BARSTOOL 17"W | 23.25"D | 47"H | 30.5"SH | 17"SD



SIDE

ARMCHAIR

BARSTOOL

INDOOR

FOUNDATION

FULTON SERIES

FINISHES: UV

STANDARD UPHOLSTERY: PSPB

SIDE CHAIR 18.5"W | 24.25"D | 38"H | 18.25"SH | 17.75"SD

ARMCHAIR 24.25"W | 25"D | 38"H | 18.25"SH | 18.75"SD | 26"AH

BARSTOOL 17"W | 23.25"D | 47"H | 30.5"SH | 17.5"SD



SIDE



ARMCHAIR



BARSTOOL

HENRY SERIES

FINISHES: UV

STANDARD UPHOLSTERY: POSOUB

SIDE CHAIR 18.5"W | 24.25"D | 38"H | 18.25"SH | 17.75"SD

ARMCHAIR 24.25"W | 25"D | 38"H | 18.25"SH | 18.75"SD | 26"AH

BARSTOOL 17"W | 23.25"D | 47"H | 30.5"SH | 17.5"SD



SIDE



ARMCHAIR



BARSTOOL

JACKSON SERIES

FINISHES: UV

STANDARD UPHOLSTERY: PSPB

SIDE CHAIR 18.5"W | 24.25"D | 38"H | 18.25"SH | 17.5"SD

ARMCHAIR 24.25"W | 25"D | 38"H | 18.25"SH | 18.5"SD | 26"AH

BARSTOOL 17"W | 23.25"D | 47"H | 30.5"SH | 17"SD



SIDE



ARMCHAIR



BARSTOOL

INDOOR

FOUNDATION

MERCER SERIES

FINISHES: UV

STANDARD UPHOLSTERY: PSPB

SIDE CHAIR 18.5"W | 24.25"D | 38"H | 18.25"SH | 17.75"SD

ARMCHAIR 24.25"W | 25"D | 38"H | 18.25"SH | 18.75"SD | 26"AH

BARSTOOL 17"W | 23.25"D | 47"H | 30.5"SH | 17.5"SD



SIDE



ARMCHAIR



BARSTOOL



REVERE SERIES

FINISHES: UV

STANDARD UPHOLSTERY: PONSOUWB

SIDE CHAIR 18.5"W | 24.25"D | 38"H | 18.25"SH | 17.75"SD

ARMCHAIR 24.25"W | 25"D | 38"H | 18.25"SH | 18.5"SD | 26"AH

BARSTOOL 17"W | 23.25"D | 47"H | 30.5"SH | 17"SD



SIDE



ARMCHAIR



BARSTOOL



WYATT SERIES

FINISHES: UV

STANDARD UPHOLSTERY: POSOUB

SIDE CHAIR 18.5"W | 24.25"D | 38"H | 18.25"SH | 17.75"SD

ARMCHAIR 24.25"W | 25"D | 38"H | 18.25"SH | 18.5"SD | 26"AH

BARSTOOL 17"W | 23.25"D | 47"H | 30.5"SH | 17"SD



SIDE



ARMCHAIR



BARSTOOL



INDOOR

CLASSIC

CC100 SERIES

FINISHES: UV

UPHOLSTERY OPTIONS: SS, PS, PSWS, PSPB, PSWSPB

SIDE CHAIR 21"W | 21"D | 33.75"H | 18.5"SH | 17.75"SD

ARMCHAIR 24.5"W | 22.5"D | 33.75"H | 18.5"SH | 17.75"SD | 26"AH

BARSTOOL 19.75"W | 21"D | 43.5"H | 30.5"SH | 17.75"SD



SIDE

ARMCHAIR

BARSTOOL

CC105 SERIES

FINISHES: UV

UPHOLSTERY OPTIONS: SS, PS, PSWS

SIDE CHAIR 21.5"W | 22.5"D | 36.5"H | 18.5"SH | 17.75"SD

ARMCHAIR 24.5"W | 22.5"D | 37"H | 18.5"SH | 17.75"SD | 26"AH

BARSTOOL 18.75"W | 21"D | 45.5"H | 30.5"SH | 17.75"SD



SIDE

ARMCHAIR

BARSTOOL

CC106 SERIES

FINISHES: UV

UPHOLSTERY OPTIONS: PSPB, PSPNB, PSWSPB, PSWSPNB

SIDE CHAIR 21.5"W | 22.5"D | 36.5"H | 18.5"SH | 17.75"SD

ARMCHAIR 24.5"W | 22.5"D | 37"H | 18.5"SH | 17.75"SD | 26"AH

BARSTOOL 18.75"W | 21"D | 45.5"H | 30.5"SH | 17.75"SD



SIDE

ARMCHAIR

BARSTOOL

INDOOR

CLASSIC

CC107 SERIES

FINISHES: UV

UPHOLSTERY OPTIONS: PSOUB, WS, 2PB

SIDE CHAIR 21.5"W | 23"D | 36.75"H | 18.5"SH | 17.75"SD

ARMCHAIR 24.5"W | 23"D | 37"H | 18.5"SH | 17.75"SD | 26"AH

BARSTOOL 18.75"W | 21.5"D | 45.25"H | 30.5"SH | 17.5"SD



SIDE

ARMCHAIR

BARSTOOL

CC110 SERIES

FINISHES: UV

UPHOLSTERY OPTIONS: SS, PS, PSWS

SIDE CHAIR 22"W | 22.5"D | 36.75"H | 18.5"SH | 17.75"SD

ARMCHAIR 24.5"W | 22.5"D | 37"H | 18.5"SH | 17.75"SD | 26"AH

BARSTOOL 18.75"W | 21"D | 45.5"H | 30.5"SH | 17.75"SD



SIDE

ARMCHAIR

BARSTOOL

CC111 SERIES

FINISHES: UV

UPHOLSTERY OPTIONS: PSPB, PSWSPSB

SIDE CHAIR 22"W | 22.5"D | 36.75"H | 18.5"SH | 17.75"SD

ARMCHAIR 24.5"W | 22.5"D | 37"H | 18.5"SH | 17.75"SD | 26"AH

BARSTOOL 18.75"W | 21"D | 45.5"H | 30.5"SH | 17.75"SD



SIDE

ARMCHAIR

BARSTOOL

INDOOR

CLASSIC

CC115 SERIES

FINISHES: Walnut Lacquer & UV

UPHOLSTERY OPTIONS: PS, PB, PNB, WS

SIDE CHAIR 20.25"W | 22"D | 35.25"H | 18.5"SH | 17.75"SD

ARMCHAIR 24.5"W | 22"D | 35.25"H | 18.5"SH | 17.75"SD | 26"AH

BARSTOOL 18.5"W | 21.75"D | 45.75"H | 30.5"SH | 17.75"SD



SIDE

ARMCHAIR

BARSTOOL

CC119 SERIES

FINISHES: UV

UPHOLSTERY OPTIONS: PSWSPHB

SIDE CHAIR 20.25"W | 22.25"D | 35.5"H | 18.5"SH | 17.75"SD

ARMCHAIR 24.5"W | 22.25"D | 35.5"H | 18.5"SH | 17.75"SD | 26"AH

BARSTOOL 18.5"W | 22"D | 46"H | 30.5"SH | 17.75"SD



SIDE

ARMCHAIR

BARSTOOL

CC170 SERIES

FINISHES: UV

UPHOLSTERY OPTIONS: PS, WS, PB

SIDE CHAIR 21.25"W | 22"D | 34"H | 18.5"SH | 17.75"SD

ARMCHAIR 24.5"W | 22"D | 34"H | 18.5"SH | 17.75"SD | 26"AH

BARSTOOL 20"W | 22.25"D | 44"H | 30.5"SH | 17.75"SD



SIDE

ARMCHAIR

BARSTOOL

INDOOR

CLASSIC

CC176 SERIES

FINISHES: UV

UPHOLSTERY OPTIONS: PS, WS, PB

SIDE CHAIR 20.25"W | 22.25"D | 35.5"H | 18.5"SH | 17.75"SD

ARMCHAIR 24.5"W | 22.25"D | 35.5"H | 18.5"SH | 17.75"SD | 26"AH

BARSTOOL 18.5"W | 22"D | 46"H | 30.5"SH | 17.75"SD



SIDE

ARMCHAIR

BARSTOOL

QUINCY SERIES

FINISHES: UV

UPHOLSTERY OPTIONS: PSPB, WS

SIDE CHAIR 20.25"W | 22"D | 35.25"H | 18.5"SH | 17.75"SD

ARMCHAIR 24.5"W | 22"D | 35.25"H | 18.5"SH | 17.75"SD | 26.25"AH

BARSTOOL 18.5"W | 21.25"D | 45.75"H | 30.5"SH | 17.25"SD



SIDE

ARMCHAIR

BARSTOOL

VERA SERIES

FINISHES: UV

UPHOLSTERY OPTIONS: PSPB

SIDE CHAIR 17.25"W | 19"D | 38.5"H | 18"SH | 16"SD

ARMCHAIR 22.5"W | 19.75"D | 38.5"H | 18"SH | 16"SD | 26"AH

BARSTOOL 22.5"W | 23"D | 38"H | 30"SH | 15"SD



SIDE

ARMCHAIR

BARSTOOL

INDOOR

CLASSIC

118 SERIES

FINISHES: Black or Walnut Lacquer

UPHOLSTERY OPTIONS: VS, PS, PNS, PB, PNB

SIDE CHAIR 16.25"W | 21.75"D | 34.75"H | 18.75"SH | 16.25"SD

BARSTOOL 16.25"W | 21.75"D | 42"H | 30"SH



SIDE

SIDE

209 SERIES

FINISHES: UV

UPHOLSTERY OPTIONS: PS, PSWS

SIDE CHAIR 18.25"W | 20.5"D | 32.5"H | 18"SH | 16.25"SD

BARSTOOL 18.5"W | 19.75"D | 42"H | 30.5"SH | 16.25"SD



SIDE

BARSTOOL

210 SERIES

FINISHES: UV

UPHOLSTERY OPTIONS: PSOUB, PSWSOUB, PS2POUB, PSWS2POUB

SIDE CHAIR 17.5"W | 21"D | 34.5"H | 18"SH | 15.75"SD

BARSTOOL 18.25"W | 20.75"D | 43.5"H | 30.5"SH | 15.75"SD



SIDE

BARSTOOL

INDOOR

BASIC

225 SERIES

FINISHES: Walnut Lacquer & UV

UPHOLSTERY OPTIONS: SS, VS, PS, WS, PB, PNB, PIB

SIDE CHAIR 17.5"W | 21"D | 34.5"H | 18"SH | 16"SD

BARSTOOL 18.25"W | 20.75"D | 43.5"H | 30.5"SH | 16"SD



SIDE

BARSTOOL

23 SERIES

FINISHES: Black or Walnut Lacquer & UV

UPHOLSTERY OPTIONS: VS, PS, PFB, PNS

SIDE CHAIR 17"W | 19.25"D | 33.25"H | 18.75"SH | 16.25"SD

ARMCHAIR 24.25"W | 19.5"D | 30.5"H | 18.75"SH | 17.5"SD | 27"AH

BARSTOOL 21.25"W | 20.5"D | 41"H | 30.25"SH | 16.25"SD | 38.75"AH



SIDE

ARMCHAIR

BARSTOOL

23 SERIES

FINISHES: Black or Walnut Lacquer & UV

UPHOLSTERY OPTIONS: PSOUNBPNA

ARMCHAIR 24.25"W | 19.5"D | 30.5"H | 18.75"SH | 17.5"SD | 27"AH

BARSTOOL 21.25"W | 20.5"D | 41"H | 30.25"SH | 16.25"SD | 38.75"AH



ARMCHAIR

INDOOR

BASIC

379 SERIES

FINISHES: UV

UPHOLSTERY OPTIONS: SS, PS, POS, POSPNB

SIDE CHAIR 19.25"W | 20.5"D | 35"H | 18.5"SH | 16.5"SD

ARMCHAIR 22.25"W | 21"D | 35"H | 18.5"SH | 16.5"SD | 27.75"AH

BARSTOOL 18"W | 19"D | 44"H | 30.75"SH | 16.25"SD



SIDE

ARMCHAIR

BARSTOOL

302 SERIES

FINISHES: Mahogany or Natural Lacquer & UV

UPHOLSTERY OPTIONS: VS, PS, PNS

BARSTOOL 18"W | 18"D | 30"H | 30"SH | 16.25"SD



BARSTOOL

788 SERIES

FINISHES: Walnut Lacquer

UPHOLSTERY OPTIONS: VS, PS, PNS

SIDE CHAIR 17.75"W | 18.75"D | 31"H | 18.75"SH | 16.75"SD

BARSTOOL 17.75"W | 18.5"D | 42.25"H | 30.25"SH | 16.25"SD



SIDE

BARSTOOL

INDOOR

VIDA

CHLOE SERIES

FINISHES: Custom lacquer finish to match UV colors

SIDE CHAIR 33.5"H | 22.75"D | 18"SD | 19.25"SH | 22.5"W

ARMCHAIR 33.5"H | 22.75"D | 17.75"SD | 19.25"SH | 22.5"W | 26.5"AH | 19.25"SW

BARSTOOL 40.25"H | 21.75"D | 17.75"SD | 30.5"SH | 22.5"W

DOUBLE 31"H | 26"D | 20.75"SD | 16.25"SH | 50"W | 23.25"AH | 46.5"SW



IRENE SERIES

FINISHES: Custom lacquer finish to match UV colors

SIDE CHAIR 32"H | 23.25"D | 17.75"SD | 19.75"SH | 19.75"W

ARMCHAIR 29.25"H | 27.5"D | 20.5"SD | 17.75"SH | 26.5"W | 26.5"AH | 22"SW

BARSTOOL 44"H | 25.25"D | 17.75"SD | 32"SH | 19.75"W

DOUBLE 28.75"H | 28"D | 17.25"SD | 17.25"SH | 45.75"W | 26.75"AH | 41.25"SW



AVA SERIES

FINISHES: Custom lacquer finish to match UV colors

SIDE CHAIR 34"H | 26"D | 20"SD | 19"SH | 21.75"W

DOUBLE 30.25"H | 27.5"D | 22"SD | 17.25"SH | 44"W | 27.5"AH | 39"SW



INDOOR

VIDA

DECO SERIES

FINISHES: Custom lacquer finish to match UV colors

SIDE CHAIR 33.5"H | 22.25"D | 17.25"SD | 19"SH | 20"W



EVAN SERIES

FINISHES: Custom lacquer finish to match UV colors

SIDE CHAIR 32"H | 21.75"D | 17"SD | 19.75"SH | 19.75"W



MAYA SERIES

FINISHES: Custom lacquer finish to match UV colors

LOUNGE 29.25"H | 27.25"D | 21.25"SD | 16.5"SH | 25.25"W | 17.25"AH | 23"SW

BARSTOOL 42.75"H | 25.25"D | 18.5"SD | 31.5"SH | 22"W



QUINN SERIES

FINISHES: Custom lacquer finish to match UV colors

SIDE CHAIR 33"H | 21.25"D | 19"SD | 20.5"SH | 21.75"W

BARSTOOL 41.25"H | 22.75"D | 19.75"SD | 31"SH | 21.75"W



INDOOR

VIDA

TAMARA SERIES

FINISHES: Custom lacquer finish to match UV colors

SIDE CHAIR 33"H | 25.25"D | 17.75"SD | 20"SH | 21.25"W | 27.5"AH | 19.75"SW

ARMCHAIR 30.75"H | 26.5"D | 21"SD | 18.5"SH | 23.5"W | 26"AH | 20.5"SW

BARSTOOL 41.25"H | 21.75"D | 30.5"SH | 20"W



314 SWIVEL BAR

FINISHES: Custom lacquer finish to match UV colors

BARSTOOL 30.5"H | 19"D | 30.5"SH | 19"W



STEN SWIVEL BAR

FINISHES: Custom lacquer finish to match UV colors

BARSTOOL 47.75"H | 20.75"D | 20.25"W



23 SWIVEL BAR

FINISHES: UV

BARSTOOL 40.5"H | 18"D | 30"SH | 21.25"W | 16.25" SD



JARL BACKLESS SWIVEL BAR

FINISHES: Lacquer

BARSTOOL 30.5"H | 18.5"D | 30.5"SH | 18.5"W



INDOOR

VIDA LOUNGE

MONROE SERIES

FINISHES: Custom lacquer finish to match UV colors

LOUNGE 39"H | 31"D | 22"SD | 18"SH | 29.5"W | 27"AH



OLIVIA SERIES

FINISHES: Custom lacquer finish to match UV colors

LOUNGE 27"H | 25.75"D | 19"SD | 16.5"SH | 31"W
26.5"AH | 19.75"SW



THEO SERIES

FINISHES: Custom lacquer finish to match UV colors

LOUNGE 32.75"H | 28.25"D | 19.25"SD | 17.75"SH | 28.25"W
25.5"AH | 24.25"SW



WESTON SERIES

FINISHES: Custom lacquer finish to match UV colors

LOUNGE 36"W | 30.75"D | 28.5"H



SERENA SERIES

FINISHES: Custom lacquer finish to match UV colors

LOUNGE 33"H | 33"D | 21.75"SD | 19"SH | 31.5"W
26.5"AH | 25.5"SW



CYRUS SERIES

FINISHES: Custom lacquer finish to match UV colors

LOUNGE 42.25"H | 34.25"D | 21.75"SD | 19"SH | 31.5"W
26.5"AH | 25.5"SW



INDOOR

VIDA LOUNGE

JASMIN SERIES

FINISHES: Custom lacquer finish to match UV colors

LOUNGE 35.75"H | 31.25"D | 21.5"SD | 17.25"SH | 26.5"W
23.5"AH | 21.25"SW



VENUS SERIES

FINISHES: Custom lacquer finish to match UV colors

LOUNGE 29.5"H | 29.25"D | 22.75"SD | 18.75"SH | 24.25"W
28"AH | 22.75"SW



MARCO SERIES

FINISHES: Custom lacquer finish to match UV colors

LOUNGE 36.75"H | 35.75"D | 22"SD | 19.75"SH | 31"W
27.25"AH | 21.25"SW



OTTOMAN

ABBEY ROUND

17.75"H | 17"D | 17"W



ASHLEY

17.5"H | 16"D | 16"W



LIAM

17.5"H | 16"W



INDOOR

OTTOMAN

KAI WITH LEGS

LEG FINISHES: Custom lacquer finish to match UV colors

17"H | 29.5"W



KAI WITH GLIDES

14"H | 29.5"W



DALIA

19"H | 22"D | 24"W



AMIR

17"H | 24"W



CAMILLE

17"H | 17"D | 31"W



CAMILLE TUFTED

17"H | 17"D | 31"W



INDOOR

LOUNGE

BEDFORD LOUNGE SERIES

FINISHES: UV

STANDARD UPHOLSTERY: POSOUB

XL DINING 24.25"W | 25"D | 37.75"H | 19"SH | 18"SD

LOUNGE 24.25"W | 24"D | 34.75"H | 17.5"SH | 17.75"SD



LOUNGE HEIGHT



DINING HEIGHT



DOUBLE BEDFORD LOUNGE SERIES

FINISHES: LACQUER

STANDARD UPHOLSTERY: POSOUB

XL DOUBLE 48"W | 25"D | 38"H | 19.5"SH | 17.5"SD

LOUNGE DOUBLE 48"W | 24"D | 34.5"H | 19.5"SH | 18"SD



LOUNGE HEIGHT



DINING HEIGHT



CARNEGIE BORNE SETTEE

FINISHES: LACQUER

STANDARD UPHOLSTERY: Channeled Back and Seat with Pleated Tufting Edge

36"H | 18"SH | 56.25"D



BORNE SETTEE

COOPER TUB CHAIR

FINISHES: LACQUER

STANDARD UPHOLSTERY: Strap Webbing with Sewn Loose Cushion

34"W | 32"D | 31"H | 17"SH | 23"SD | 31"AH



TUB CHAIR

INDOOR

LOUNGE

LEXINGTON LOUNGE CHAIR

FINISHES: LACQUER

STANDARD UPHOLSTERY: Webbed Seat with Sewn Pullover Cover and Wood Trim Back

30"W | 301.25"D | 32.5"H | 18"SH | 20.5"SD



LOUNGE

MORGAN CLUB LOUNGE

FINISHES: LACQUER

STANDARD UPHOLSTERY: Webbed Seat with Sewn Pullover Cover and Wood Trim Back

31"W | 34"D | 31.5"H | 18"SH | 23"SD | 23.25"AH



LOUNGE

THOMPSON SERIES

FINISHES: LACQUER

STANDARD UPHOLSTERY: Webbed Seat with Sewn Loose Seat Cushion

SIDE CHAIR 22"W | 23.5"D | 37.75"H | 18"SH | 16.5"SD

ARMCHAIR 24"W | 26"D | 38"H | 18"SH | 17.75"SD | 26.5"AH

WING CHAIR 30"W | 30.25"D | 32.5"H | 18"SH | 20.5"SD



SIDE

ARMCHAIR

WING CHAIR

CHAIR DETAILS AND ACCESSORIES

NAIL HEADS



ANTIQUE BRASS



ANTIQUE PEWTER



FRENCH NATURAL



SPECKLED #7



PEARL GREY



PEWTER #1



PEWTER #2



SPECKLED #8



SMOOTH BRASS



SMOOTH CHROME

CASTERS



CASTERS



BLACK



OPAQUE

GLIDES



NYLON



FELT TIP



RUBBER CUSHION

FOOT RINGS



BRASS OR CHROME

FOOT RESTS

BLACK

CHROME

NICKEL

BRASS

COPPER



INDOOR

TABLE BASES

FSB SERIES (INDOOR/OUTDOOR)

FINISHES: SILVER OR BLACK

ZINC UNDERCOATED FOR INDOOR AND OUTDOOR USE

SQUARE 18" | 21"

END BASE 18" X 9"

ROUND 18" | 21" | 26" | 29"

DOUBLE RECTANGLE 27" X 18"

TRIPLE ROUND 36" | 40"



SQUARE



ROUND



END BASE



DOUBLE RECTANGLE



TRIPLE ROUND

FSS SERIES (INDOOR/OUTDOOR)

MATERIAL: COATED STAINLESS STEEL

SQUARE 18" | 21"

DOUBLE RECTANGLE 27" X 18"

ROUND 18" | 21" | 29"

TRIPLE ROUND 29"



SQUARE



ROUND



DOUBLE RECTANGLE



TRIPLE ROUND

INDOOR

TABLE BASES

500 SERIES (INDOOR ONLY)

MATERIAL: COATED MILD STEEL

TRENDING

SQUARE 17" | 22"

ROUND 17" | 22"

END BASE 19" X 18"

DOUBLE RECTANGLE 16" X 27.5"

TRIPLE ROUND 28.5"



SQUARE



ROUND



DOUBLE RECTANGLE



TRIPLE ROUND

9000 SERIES

FINISHES: BLACK TEXTURE

18" | 20" | 22" | 26" | 30"



9000

900 SERIES

FINISHES: BLACK TEXTURE
WITH ZINC COATING

24" X 30" | 22" | 30" | 36"



900

FSB UMBRELLA

FINISHES: BLACK OR
SILVER

18" | 21" | 22" | 29.5"



FSB UMB

ADA OR UMBRELLA FRAME

FINISHES: POWDER COATED
ALUMINUM FRAME

36" x 36"



FOUR LEG FRAME

INDOOR

TABLE BASES

VINTAGE SERIES



ANTOINETTE

BLACK TEXTURE
SIZES: 22" | 26" | 32"



ANTOINETTE EB

BLACK TEXTURE
SPREAD: 21"



ARIEL

BLACK SEMI GLOSS
SIZES: 24"



CLARISSE

BLACK SEMI GLOSS
SIZES: 17"



DANTE

BLACK SEMI GLOSS
SIZES: 24"



EVA

BLACK SEMI GLOSS
SIZES: 15"



FRANZ

BLACK SEMI GLOSS
SIZES: 15"



HUGO

BLACK SEMI GLOSS
SIZES: 15"



JULIET

BLACK SEMI GLOSS
SIZES: 24"



PIETA

BLACK SEMI GLOSS
SIZES: 15"



PITTI

BLACK SEMI GLOSS
SIZES: 24"



RAFAEL

BLACK SEMI GLOSS
SIZES: 19"



TANGO

BLACK SEMI GLOSS
SIZES: 19"

INDOOR

TABLE TOPS

WOOD EDGE



Wood Edge table tops are FOB PA.

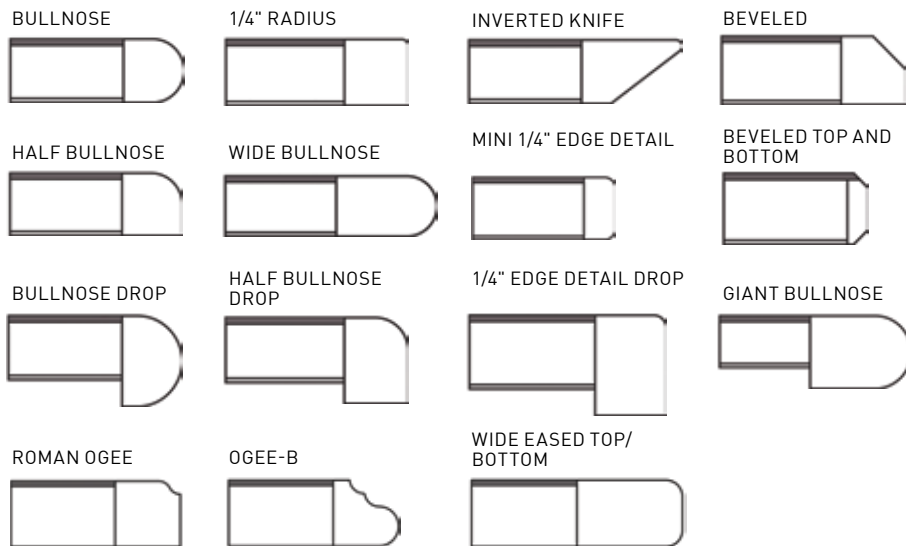
NOTE: Crating fees may apply.

THICKNESS

EDGE: 0.325", 1.25", 2", 2.5"

TABLE: 1.25", 1.75"

EDGE PROFILES AVAILABLE:



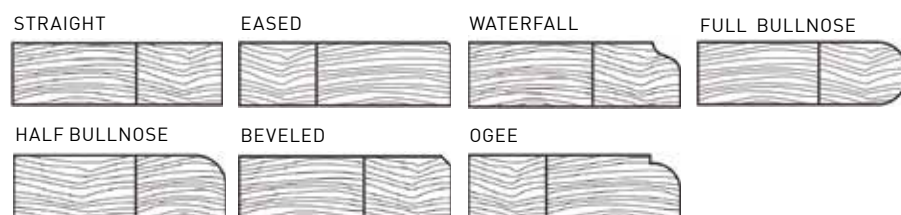
SOLID WOOD



SOLID PLANK WOOD

WOOD SPECIES AVAILABLE: MAPLE, BIRCH, WALNUT, OAK, MULTI

SOLID WOOD PLANK EDGE PROFILES



SOLID BUTCHER BLOCK

WOOD SPECIES AVAILABLE: MAPLE, WALNUT, OAK

SOLID WOOD BUTCHER BLOCK EDGE PROFILES



THICKNESS

TABLE: 1.25", 1.75"

Solid Wood table tops are FOB WI.

NOTE: Crating fees may apply.

INDOOR

TABLE TOPS

METAL EDGE



Metal Edge table tops are FOB PA.

NOTE: Crating fees may apply.

EDGE PROFILES AVAILABLE:

SMOOTH

FLUTED



THICKNESS

EDGE: 0.125"

TABLE: 1.25"

PLYWOOD EDGE



Plywood Edge table tops are FOB PA.

NOTE: Crating fees may apply.

EDGE PROFILES AVAILABLE:

BULLNOSE

KNIFE



THICKNESS

TABLE: 1.25"

PADDED EDGE



Padded Edge table tops are FOB NJ.

NOTE: Crating fees may apply.

THICKNESS

1.125"

SYNTHETIC EDGE



Synthetic Edge table tops are FOB PA.

NOTE: Crating fees may apply.

EDGE PROFILES AVAILABLE:

VINYL BULLNOSE

SPECIAL VINYL
BULLNOSE

3MM PVC



THICKNESS

EDGE: 0.125", 0.188"

TABLE: 1.25"

SELF EDGE



Self Edge table tops are FOB PA.

NOTE: Crating fees may apply.

EDGE PROFILES AVAILABLE:

SQUARE CORNERS

3" RADIUS
CORNERS

2" DROP EDGE



THICKNESS

EDGE: 0.05"

TABLE: 1.25", 2"

INDOOR

TABLE TOPS

THINSCAPE (INDOOR/OUTDOOR)



Thinscape table tops are FOB NJ.

***NOTE:** Crating fees apply

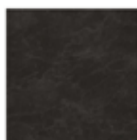
THICKNESS

.5" with a .75" substrate

EDGE PROFILES AVAILABLE:

EASED

BLACK AMANI



CALCUTTA BLANC



ITALIAN CARRARA



QUARTZ RAPIDS



QUARTZITE FALLS



SOLUNA



RUGGED STEEL



SOAPSTONE MIST



SOLENNIE MARBLE



SPANISH LIMESTONE



STERLING CALCUTTA



SEA LINE MIST



TAJ MAHAL



TORTONA QUARTZITE



VOLAKAS MARBLE



PIETRA NOIR



TABLE DETAILS AND ACCESSORIES

TABLE GLIDES



TABLE SHOX



STEEL



NYLON

COLUMNS



STANDARD HT SERIES

2" | 3" | 4"

BLACK

NOTE: Bar Height also available.



TELESCOPING SERIES

30" or 39 1/2" | 20 1/8" or 27 3/4"

BLACK TEXTURE

SPIDERS



9" SPIDER



15" SPIDER



19" SPIDER

PIN LEGS



BOLT DOWN OR WITH GLIDE

FOOT REST AND RINGS



WAGON WHEEL
14" | 19"



STAND UP
22"



TRIANGULAR

TABLE MOUNTS



CANTILEVER SERIES

WALL 16" x 33" | 16" x 21"

FLOOR 28" x 32" | 28" x 18"

OUTDOOR SEATING

831 & 2831 SERIES

- RUST PROOF ALUMINUM FRAME
- WOVEN WITH DURABLE RESIN STRANDS

SIDE CHAIR 19.5"W | 22"D | 35.25"H | 18"SH

BARSTOOL 19"W | 21.5"D | 45.5"H | 30"SH



SIDE



BARSTOOL



ASBURY SERIES

- RUST PROOF ALUMINUM FRAME
- WOVEN WITH DURABLE RESIN STRANDS

SIDE CHAIR 18"W | 25"D | 34.25"H | 17.5"SH

ARMCHAIR 23.5"W | 26"D | 34.5"H | 20"SH | 25.25"AH

BARSTOOL 17"W | 22.5"D | 44"H | 30"SH



SIDE



ARMCHAIR



BARSTOOL



LOUNGE 27.5"W | 26"D | 34.5"H | 18"SH | 25.75"AH

BACKLESS BAR 17.5"W | 17.5"D | 29.5"H | 29.5"SH

END TABLE 18.25"W | 18.25"D | 18.25"H

COFFEE TABLE 21.25"W | 36.25"D | 18.5"H



LOUNGE



BACKLESS BAR



END TABLE



COFFEE TABLE

OUTDOOR SEATING

BAYHEAD SERIES

FINISH: POWDER COATED ALUMINUM FRAME

AVAILABLE IN TEAK, PERFORMANCE WEAVE OR WOVEN RESIN STRANDS

SIDE CHAIR 18.5"W | 22.5"D | 33.5"H | 17.5"SH

ARMCHAIR 23.75"W | 21"D | 32.75"H | 17.5"SH | 26.5"AH

BARSTOOL 18.5"W | 23"D | 45.5"H | 30"SH



SIDE

ARMCHAIR

BARSTOOL

CAMPAIGN SERIES

FINISH: POWDER COATED ALUMINUM FRAME

SEAT AND BACK MADE WITH FERRARI BATYLINE FABRIC

SIDE CHAIR 21.5"W | 21"D | 33"H | 18"SH | 24.75"AH



ARMCHAIR

ISLE SERIES

-ELECTRO GALVANIZED STEEL FRAME

-POLYPROPYLENE AND POLYESTER ROPE WEAVE SEAT AND BACK

SIDE CHAIR 35"H | 22"D | 17.75"SH | 22.75"W

ARMCHAIR 35.25"H | 24"D | 18.5"SH | 25.5" AH | 24.75"W

BARSTOOL 46.5"H | 25.5"D | 30"SH | 37" AH | 24.75"W



SIDE

ARM

BARSTOOL

OUTDOOR SEATING

KNOT SERIES

ALUMINUM FRAME AVAILABLE WITH A VARIETY OF FINISHES
STANDARD UPHOLSTERY: PS, BS

SIDE CHAIR 22.75"W | 22"D | 35"H | 18"SH

HALF BACK 24.5"W | 23.5"D | 36"H | 29"SH

BARSTOOL 24.5"W | 23.5"D | 42.5"H | 29"SH



SIDE



HALF BACK BAR



BARSTOOL



LOUNGE & OTTOMAN



SOFA

LOUNGE 30.5"W | 31"D | 39.5"H | 18"SH

OTTOMAN 21.25"W | 20.5"D | 16.75"H

SOFA 56.25"W | 30"D | 39.5"H | 17.5"SH

LURE SERIES

-SOLID GENUINE TEAK FRAME

-POLYPROPYLENE AND POLYESTER ROPE WEAVE SEAT AND BACK

SIDE CHAIR 18.75"W | 22.75"D | 34"H | 18.25"SH

BARSTOOL 20"W | 24.25"D | 43.25"H | 29.5"SH



SIDE



BARSTOOL



OUTDOOR TABLE TOPS

WILSONART SOLID SURFACE ACRYLIC

STANDARD WITH EASED EDGE. ADDITIONAL
EDGES AVAILABLE BY REQUEST

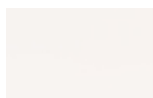
EASED

- APPROPRIATE FOR INDOOR AND OUTDOOR APPLICATIONS
- STANDARD WITH MATTE FINISH
- MADE ACRYLIC RESINS, FIRE-RETARDANT FILLERS AND PROPRIETARY COLORING AGENTS THAT ARE HOMOGENEOUS.
- 1/2" EDGE THICKNESS

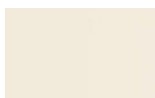
- WilsonArt Solid Surface Acrylic table tops are FOB NJ.
- Crating fees will apply

For a complete list of sizes and information please see our full catalog.

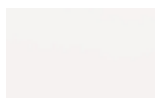
SERIES 1



Designer White



Antique White

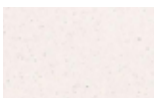


Frosty White

SERIES 2



Beige Tempest

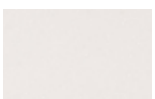


Frosty White
Mirage

SERIES 3



Arctic Melange



Milk Glass Spectra



Hot Stone

SERIES 5



Beige Travertine



Whisper White



Cloud Mist



Ice Statuario

OUTDOOR TABLE TOPS

ECO LINE ACRYLIC



- APPROPRIATE FOR INDOOR AND OUTDOOR APPLICATIONS
- 3/4" THICK FULL MARINE GRADE PLYWOOD SUBSTRATE
- HYGIENIC, NON-POROUS SURFACE, UV STABLE AND STAIN RESISTANT
- STANDARD WITH ECO LINE EDGE
- 1 1/4" EDGE THICKNESS

- Eco Line Acrylic table tops are FOB NY.

For a complete list of sizes and information please see our full catalog.

SERIES 1



Brownstone



Butter Pecan



Cocoa



Dove Grey



Sage Brush



Sandy Canyon



Sandy Rox



Stellar Blue



Sueillia Green



Wheat



Gravel



Harvest Sand



Hazel Nut



Moon Dust



Mahogany Rox



Heather Green



Lynne Star



Oahu Green



Pistachio



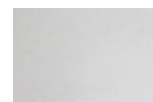
Nutmeg



Pebble Rox



Pezza



White Quartz



Riverstone



Golden Oak



Kauai Purple



Saffron

SERIES 2



Rockie



Red Granite



Oat



Khaki



Grey Granite



Green Granite



Gold Dust



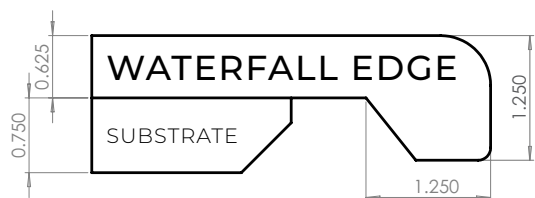
Glacier



Blue Granite

OUTDOOR TABLE TOPS

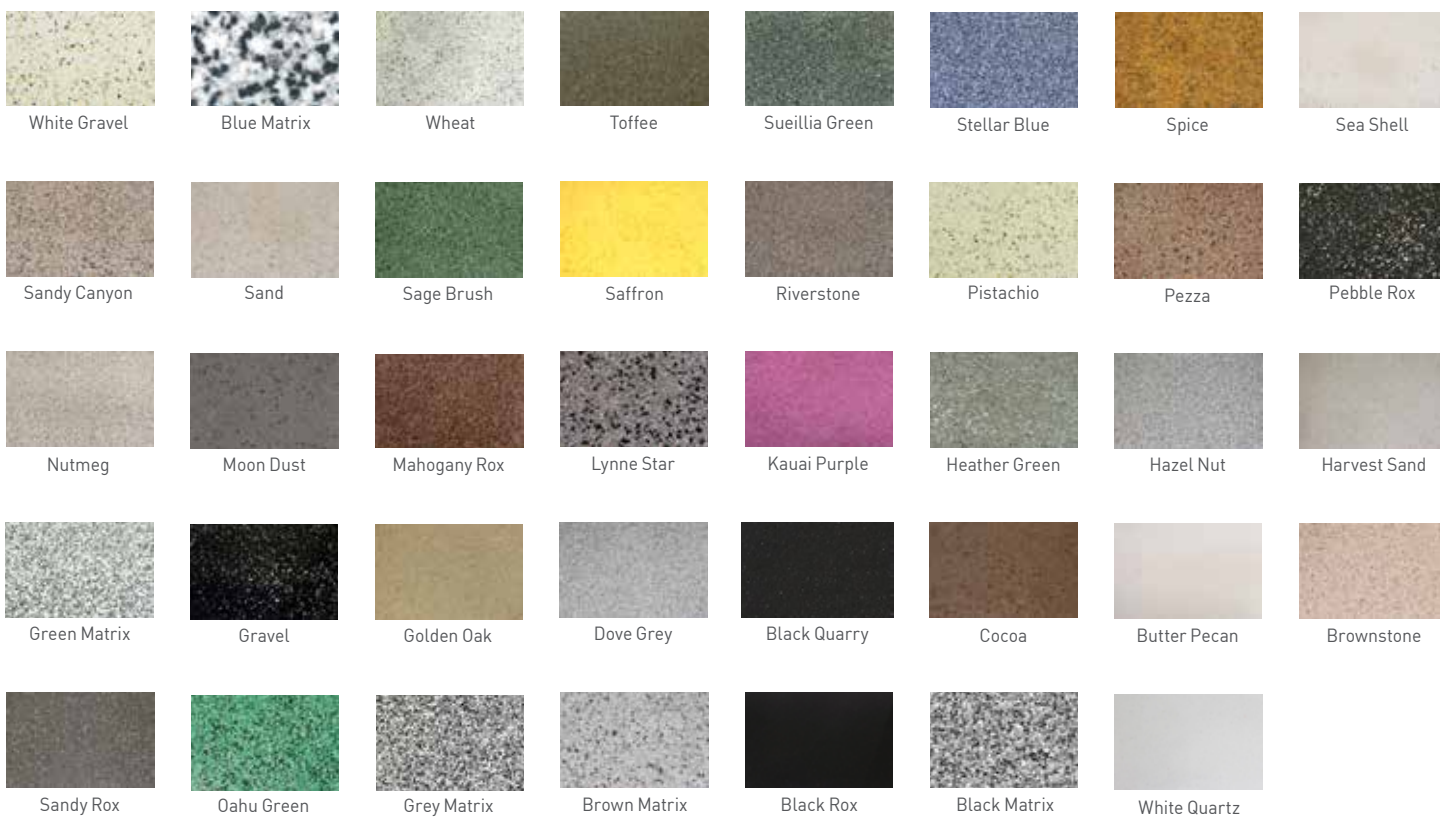
SOLID ACRYLIC



- APPROPRIATE FOR INDOOR AND OUTDOOR APPLICATIONS
- 3/4" THICK FULL MARINE GRADE PLYWOOD SUBSTRATE
- HYGIENIC, NON-POROUS SURFACE, UV STABLE AND STAIN RESISTANT
- STANDARD WITH WATERFALL PROFILE EDGE
- 1/4" EDGE THICKNESS

For a complete list of sizes and information please see our full catalog.

STANDARD OPAQUE



TRANSLUCENT



TRANSLUCENT CONT.



Stoney Moss



Steel Grey



Starlit



Rockie



Red Granite



Aspen White



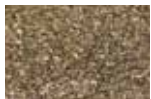
Bermuda Coral



Orange Peel



Olivine



Oat



Midnight



Melon



Lime



Khaki



Harvest Frost



Blue Granite



Grey Granite



Green Granite



Aegean Blue



Golden Ray



Gold Mine



Gold Dust



Glacier



Forest



Desert Sand



Crusher Run



Aqua Ice

OUTDOOR

TABLE TOPS

SHORE TABLES

- ALUMINUM FRAME AVAILABLE IN OXIDE OR CHARCOAL GREY
- TOP MADE OUT OF SUPERSTONE

COFFEE TABLE 13.75"W | 30"D | 13.75"H

END TABLE 30"W | 27"D | 17.75"H



COFFEE TABLE



END TABLE

SYNTHETIC TEAK TABLETOPS

- POWDER COATED ALUMINUM FRAME
- SYNTHETIC TEAK SLATS

SIZES AVAILABLE:

24" x 30"

30" x 30"

30" x 48"

36" x 36"

48" diameter



STIJL TABLETOPS

- POWDER COATED ALUMINUM FRAME
- INSERTS MADE OUT OF WILSONART SOLID SURFACE ACRYLIC

SIZES AVAILABLE:

24" x 24"

30" x 30"

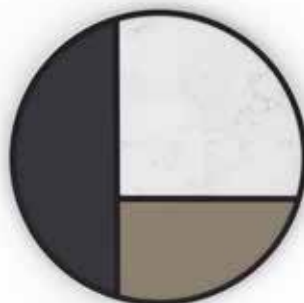
30" x 48"

36" x 36"

30" diameter

36" diameter

42" diameter





WOOD CHAIRS AND BARSTOOLS

If chair/barstool shows any sign of structural failure (ie hardware), GAR Products® strongly recommends removing the piece from service immediately. Perform a thorough inspection of each chair/barstool once a month. Particular care should be taken in inspecting all joints for any loosening. One loose joint will put extra pressure on other joints, resulting in all joints loosening, which may eventually cause the chair/barstool to collapse. In the event that any joints become loose take the chair/barstool out of service immediately and repair prior to putting the chair/barstool back into service. A common cause of loosening joints is customers rocking backwards in the chair/barstool. Care should be taken while handling the chairs/barstools for any reason. The chairs/barstools should not be dropped on the floor from any height, particularly when cleaning the floor and placing the chair/barstool on a table/bar. If the chair/barstool is dropped it will result in the finish chipping and the chair/barstool possibly breaking. GAR Products® recommends cleaning all wood furniture with furniture polish. We suggest dark oil for mahogany, walnut etc., and lemon oil for light finishes such as natural and honey oak. Never clean any wood product (Chairs, Barstools, or Wood Table Tops) with any water based cleaning solution or water itself. Cleaning any wooden furniture with water or a water based solution will result in the grain and finish raising and peeling. We suggest educating all employees on how to clean the tables and chairs appropriately to ensure the longevity and beauty of the product. Chairs and barstools should not be subjected to extreme temperature, particularly heat or moisture near cooking facilities which will also result in the finish lifting and peeling. People should never stand on chairs/barstools in place of step stools or ladders. Please note that our bentwood chairs are a handmade product, with a certain amount of flexing when in use. In some cases, this will cause the lag bolts under the seat or attaching screws to loosen slightly.

CAST IRON TABLE BASES

Wipe clean with a damp cloth, very mild soap and water.

WOOD EDGE, SOLID WOOD & LAMINATE TABLE TOPS

To achieve maximum life out of all wood edges and solid wood table tops please refer to the following instructions. Improper care will void the manufacturer's warranty on the product. For daily cleaning, use a soft cloth dampened with a mild detergent and water. AVOID THE USE OF AMMONIA, DEGREASERS, SILICON, BLEACH OR ABRASIVE CLEANERS. Wipe the surface dry with a clean soft cloth. For additional protection a non-wax build-up polish may be used. If scratches develop in the wood, you can repair using a colored wax repair stick. All wet spills should be wiped dry immediately. Avoid prolonged exposure to direct sunlight, high temperature, and high humidity as these conditions may cause damage to the finish or the wood.

WILSONART SOLID SURFACE

For day to day cleaning, warm soapy water or non-abrasive household cleaners such as glass cleaner, Fantastik®, Formula 409® or commercially available solid surface cleaners will remove most residues. Then rinse and towel dry the surface to prevent spotting especially in areas with hard water. For a final touch, you may apply Protect All Shine Plus™ to your countertop for a clean, dry professional appearance.

For stubborn residue that will not come out with day to day cleaning methods, apply an abrasive cleaner like Bon-ami®, Comet® or Ajax® and a damp sponge, buff in a circular motion. Then rinse and towel dry.

WILSONART THINSCAPE

To clean the surface, use a damp cloth or sponge and a mild soap or detergent. Rinse thoroughly with warm water, and wipe dry. Difficult stains such as coffee or tea can be removed using a mild household cleaner/detergent and a soft bristled brush, repeating as necessary. If a stain persists, use a paste of baking soda and water and apply with a soft bristled brush. Light scrubbing for 10 to 20 strokes should remove most stains. Although baking soda is a low abrasive, excessive scrubbing or exerting too much force could damage the decorative surface. Stubborn stains that resist any of the above cleaning methods may require the use of undiluted household bleach or nail polish remover. Apply the bleach or nail polish remover to the stain and let stand no longer than two minutes. Rinse thoroughly with warm water and wipe dry. This step may be repeated if the stain appears to be going away and the color of the THINSCAPE slab has not been affected.

WARNING: *Prolonged exposure of Wilsonart® THINSCAPE™ Performance Top surfaces to bleach will cause discoloration. Hot pans and heat-producing appliances (such as electric skillets), when set directly upon countertops, can mar the product's beauty. Always use a heat shield, hot pad or trivet.*

TEAK MAINTENANCE

All of our teak is naturally grown and will have varying color and grain in each piece. Proper care and cleaning will enhance and maintain the natural beauty of the wood. Left by itself, the teak will develop a silver-gray patina. For general cleaning when removing dirt, moss and surface stains, use a sponge or a soft cloth and clean with a solution of, 2 ounces of dishwashing soap with, 8 cups of lukewarm water. Make sure to rinse completely with clean water and allow time to air dry before use. For further care and protection of your teak furniture use Golden Care protection products. Please note that retreatment will be required as all protective finishes are not permanent.

SYNTHETIC TEAK MAINTENANCE

Clean the synthetic teak with a mild chlorine-free soap and water then rinse. Do not use a rough and/or hard material to clean as this may cause scratches to the surface.

HDPE WEAVE MAINTENANCE

Clean the HDPE Weave with mild soap and water, hose to rinse. All-purpose cleaners or 1 part bleach to 2 part water solutions take care of extreme cleaning needs.

ROPE WEAVE MAINTENANCE

We recommend to simply wash it with mild soap and water solution, rinse and allow to dry thoroughly.

STAINLESS STEEL MAINTENANCE

Scratches in stainless can be buffed out with Scotch Brite pads or very fine grit sand paper (steel wool is not recommended due to the mild steel fibers contaminating the stainless surface therefore leaving rust colored stains). It is also recommended that the surface of the grain is followed in the same direction when buffing out scratches. Stainless although very resistant to corrosive environments do require periodic care and maintenance. Cleaning is necessary on all grades of stainless to prevent corrosive particles from gathering in the grain of the stainless surface. This results in a rust colored staining. Weekly cleaning with a good stainless cleaner will keep the surface free from corrosive particles. In environments where there is salt, chlorine or air pollution present, a weekly clean with water and liquid detergent followed by drying will keep the stainless surface free from contamination. If staining has occurred the surface can be cleaned with a nonabrasive kitchen cream cleanser and a light coat of a good quality protective spray such as Fluid Film can be applied.

CAMPAIGN SERIES - (FERRARI BATYLINE)

1. Apply mild soap and water on the surface to clean.
2. Leave on for 2 to 3 minutes.
3. Scrub the surface repeatedly making a circular motion and not front to back.
4. Leave on for about 1 minute.
5. Remove the deposits with a moist sponge or rinse with clear water.

SUNBRELLA

GENERAL CLEANING METHODS: Brush off dirt before it becomes embedded in the fabric, wipe up spills as soon as they occur, and spot-clean by sponging cushions with mild soap and warm water.

HAND-WASHING: Soak fabric in a solution of ¼-cup mild soap per gallon of lukewarm water. Use a sponge or a soft bristle brush as necessary. Rinse thoroughly with clean water. Hang and allow to air-dry. These fabrics usually air-dry very quickly.

MACHINE-WASHING: Remove cushions from cushion covers. Machine-wash fabric in cold water with mild laundry soap, or use 7 parts bleach to 3 parts cold water, hang and allow to air-dry.

SPOT-CLEANING UPHOLSTERED PIECES: Apply a light mist of mild soap and water using a spray bottle. Remove the stain with a sponge or a very soft bristle brush. Rinse with clean water and air-dry, blotting or wet-vacuuming excess water. Repeat until all soap residue is removed. Unless these care and maintenance procedures are properly followed, and other products are used as they are intended, all warranties, both expressed and implied shall be null and void.

SOLID ACRYLIC MAINTENANCE

GENERAL CLEANING - All table tops and fabricated sheet goods can be cleaned by using soap and water. Apply soap and water with a sponge or damp cloth, then towel dry to eliminate water spots.

PROTECTING THE SURFACE - All table tops and fabricated sheet goods are resistant to most household cleaners. Table tops and sheet goods should NOT be exposed to chemicals such as paint remover, metal cleaner, oven cleaner, acetone, nail polish remover, abrasive cleaner, and acid drain cleaner. Protect the finish with acrylic polish such as Counter-top Magic or furniture polish. All surfaces should NOT be exposed to direct heat. The use of heat mats underneath hot objects will avoid damage to your surface.

REPAIRS - Deep scratches and burns should be repaired by a professional fabricator; although little harm can be done by attempting minor repairs. For blotchy appearance and minor scratches please refer to our table top care and maintenance guide found under the resource tab on our website. Most supplies can be purchased at auto parts or paint stores.

MISTY GEMS: Light scratches in this matte finish can be buffed out with a medium Scotch Brite pad. After scratches are removed, simply wipe down with soap and water then towel dry to eliminate water spots.

OPAQUES, GRANITES, TRANSLUCENTS, CRYSTALLINE, QUARTZ ROX & WOODLANDS: Light scratches in this gloss finish can be buffed out with a white Scotch Brite pad, or wet sanded with 2000 grit sandpaper. After scratches are removed, simply wipe down with soap and water then towel dry to eliminate water spots.

CAST ALUMINUM CARE

Clean with mild soap and water. For any wear in the lacquer finish spray with Rustoleum Clear Exterior Lacquer.

CAST IRON CARE

Wipe clean with a damp cloth, very mild soap and water.



“Craftsmanship”



“Making Memories”