

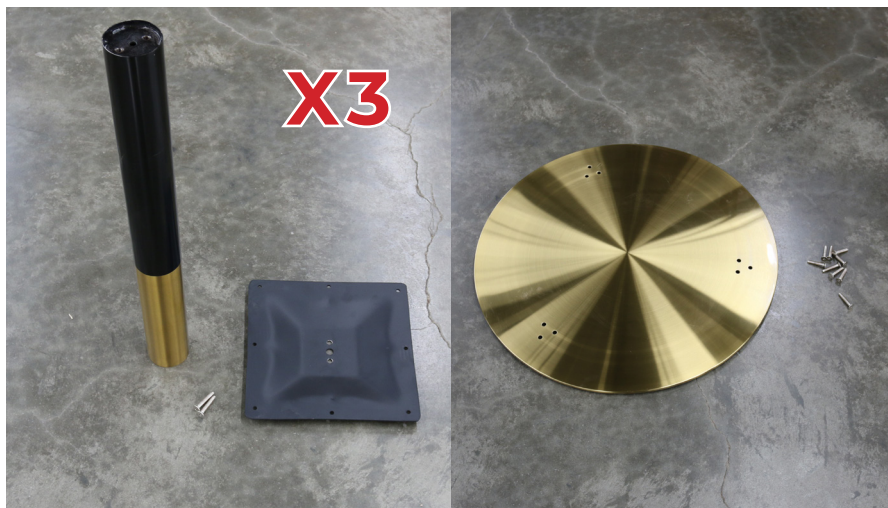
500 TRIPLE ROUND BASE ASSEMBLY

PARTS LIST

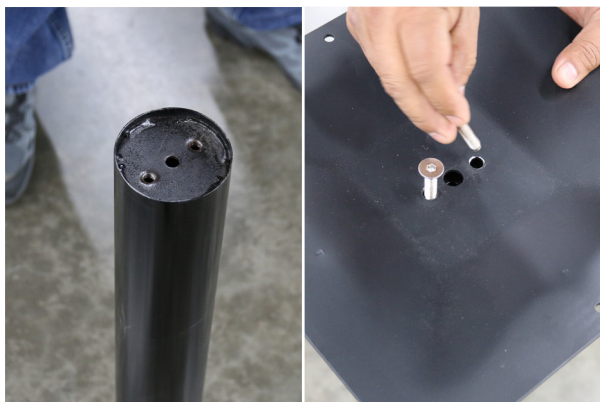
- (1) Base
- (3) Columns
- (3) Top Plates
- (15) Bolts

TOOLS LIST

Allen Key



1



ATTACH THE TOP PLATE TO THE COLUMN USING TWO BOLTS AND FINGER TIGHTEN THEM.

2



USE THE ALLEN KEY TO FIRMLY TIGHTEN TOP PLATE TO COLUMN **(REPEAT STEPS 1 AND 2 THREE TIMES)**



FLIP COLUMNS OVER PLACING THE TOP PLATE ON THE GROUND



FLIP THE BASE OVER AND LINE UP THE HOLES IN THE BASE TO THE HOLES IN THE COLUMNS.

5



PLACE BOLTS IN THE ALIGNED HOLES AND USE THE ALLEN KEY TO TIGHTEN THE BASE TO THE COLUMN. **(REPEAT FOR EACH COLUMN)**

6



FLIP FINAL ASSEMBLY OVER