

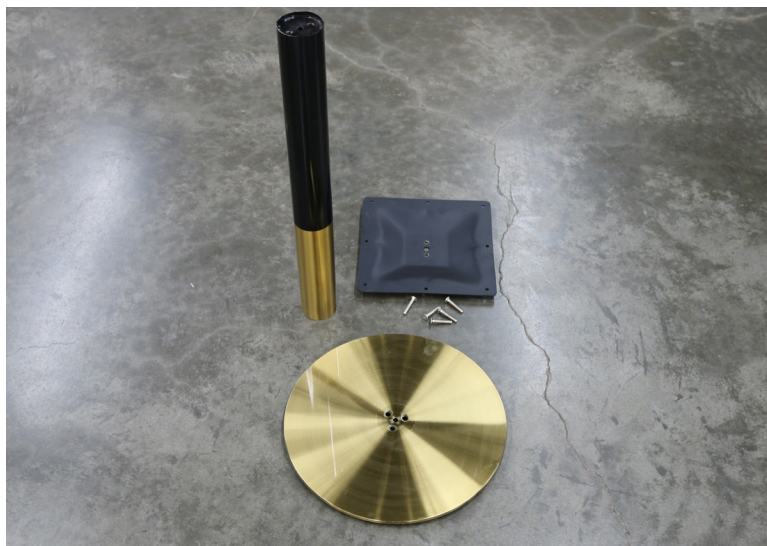
500 BASE ASSEMBLY

PARTS LIST

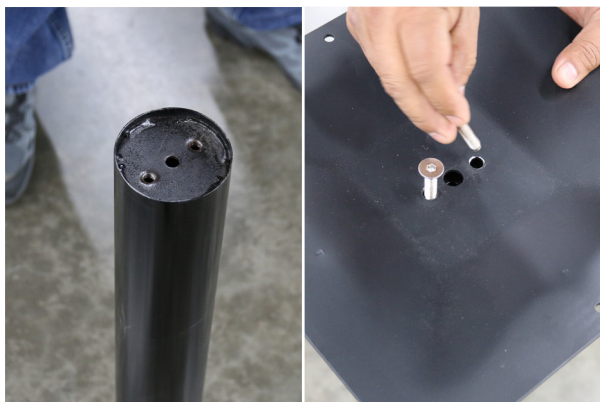
- (1) Base
- (1) Column
- (1) Top Plate
- (5) Bolts

TOOLS LIST

Allen Key



1



ATTACH THE TOP PLATE TO THE COLUMN USING TWO BOLTS AND FINGER TIGHTEN THEM.

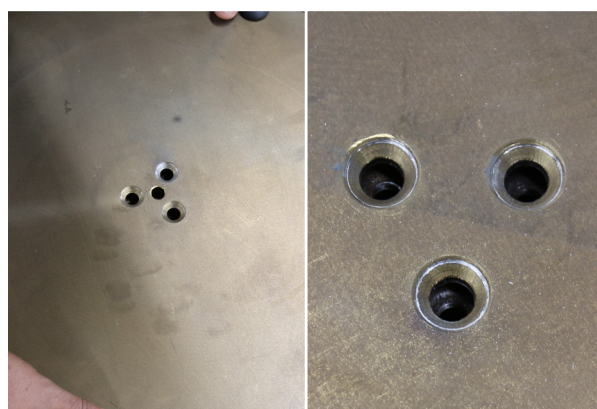
2



USE THE ALLEN KEY TO FIRMLY TIGHTEN TOP PLATE TO COLUMN

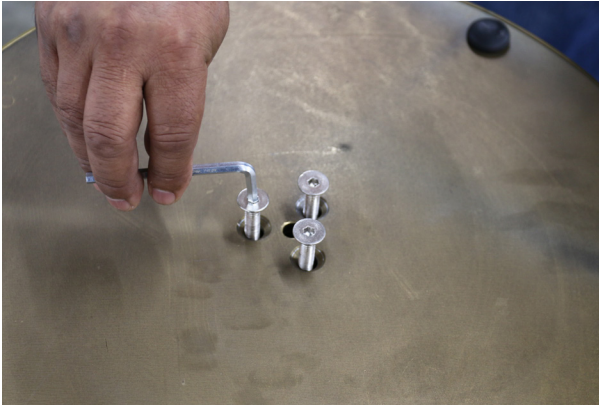


FLIP COLUMN OVER PLACING THE TOP PLATE ON THE GROUND



FLIP THE BASE OVER AND LINE UP THE HOLES IN THE BASE TO THE HOLES IN THE COLUMN.

5



PLACE BOLTS IN THE ALIGNED HOLES AND USE
THE ALLEN KEY TO TIGHTEN THE BASE TO THE
COLUMN

6



FLIP FINAL ASSEMBLY OVER