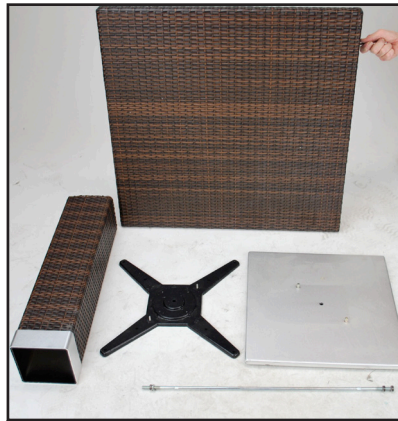




Great conversations start here.™

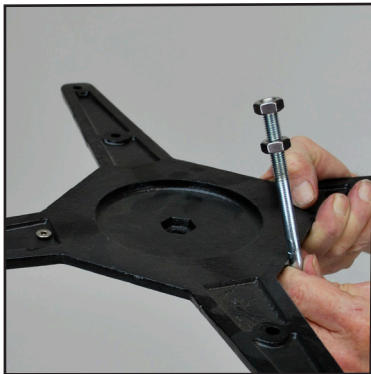
Asbury Table Assembly Instructions



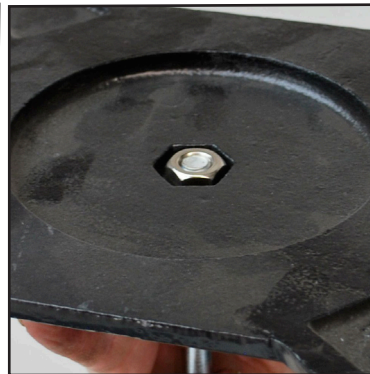
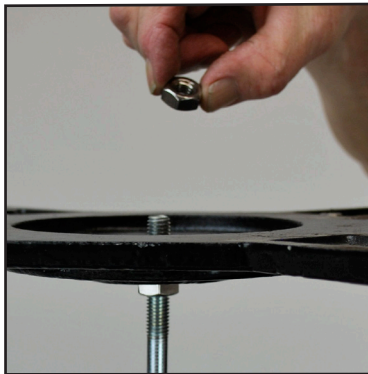
Parts

- (1) Table Top
- (1) Column
- (1) Spider
- (1) Bottom
- (1) Tie Rod
- (3) Nuts
- (4) Bolts

1.



Remove one nut from rod, insert rod through hole in spider and reattach the nut. Pull down rod flush in hole and tighten bottom nut with wrench



2.



Place the spider on the ground with rod facing up. Place column on the spider

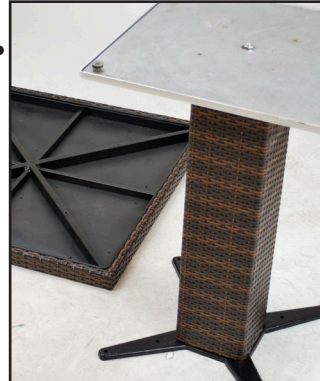
3.



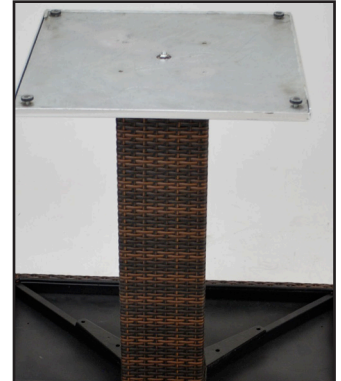
Place the bottom on the column with the rod through the hole in the bottom, and attach the washers and nut and tighten with wrench.



4.



Place the table top on the floor with bottom facing up. Place the column on the table top, matching up the holes on the spider with the holes on the table top frame.



5.



First, place and tighten all bolts by hand in the spider holes. Then tighten with wrench to complete assembly.